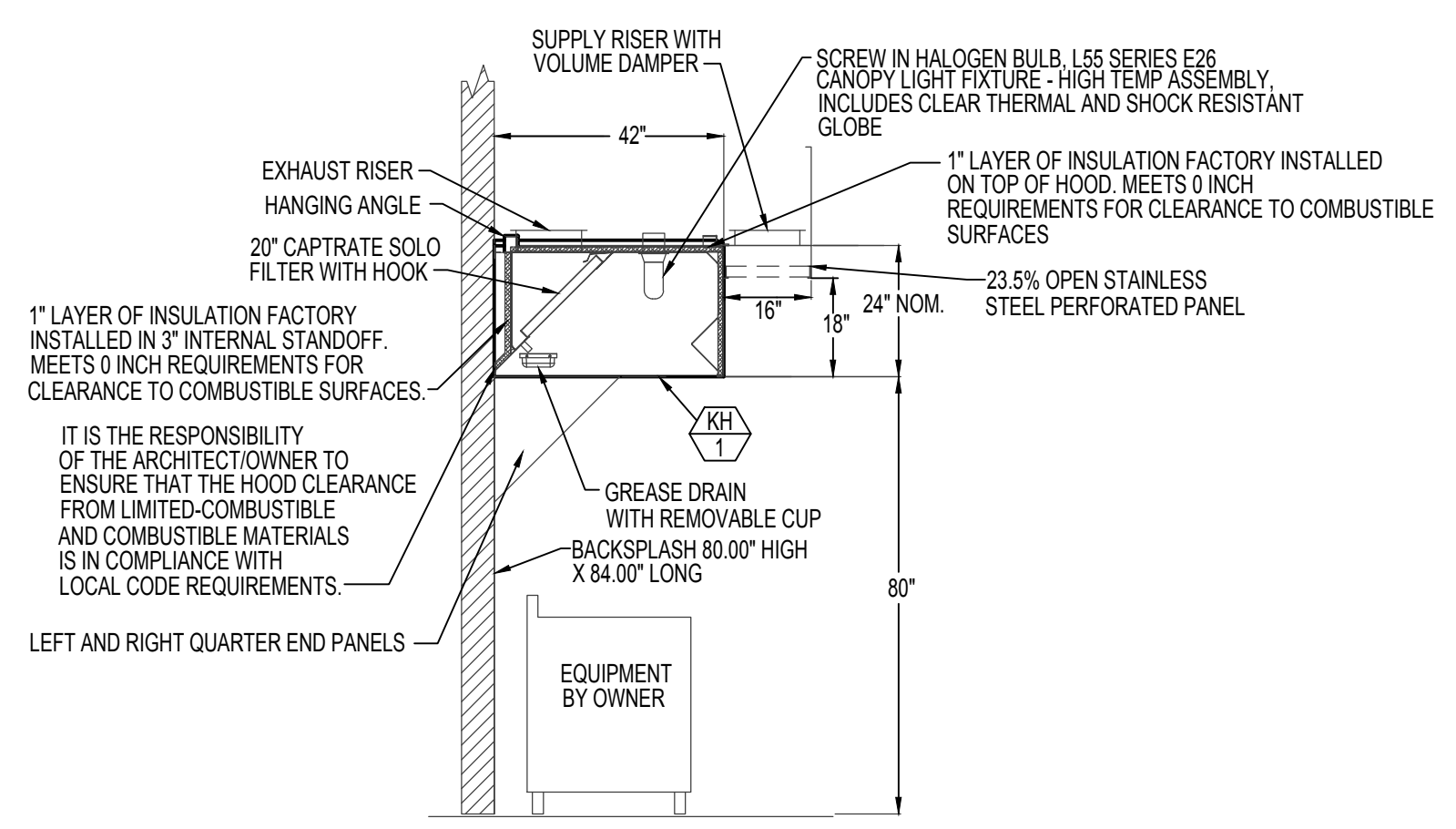
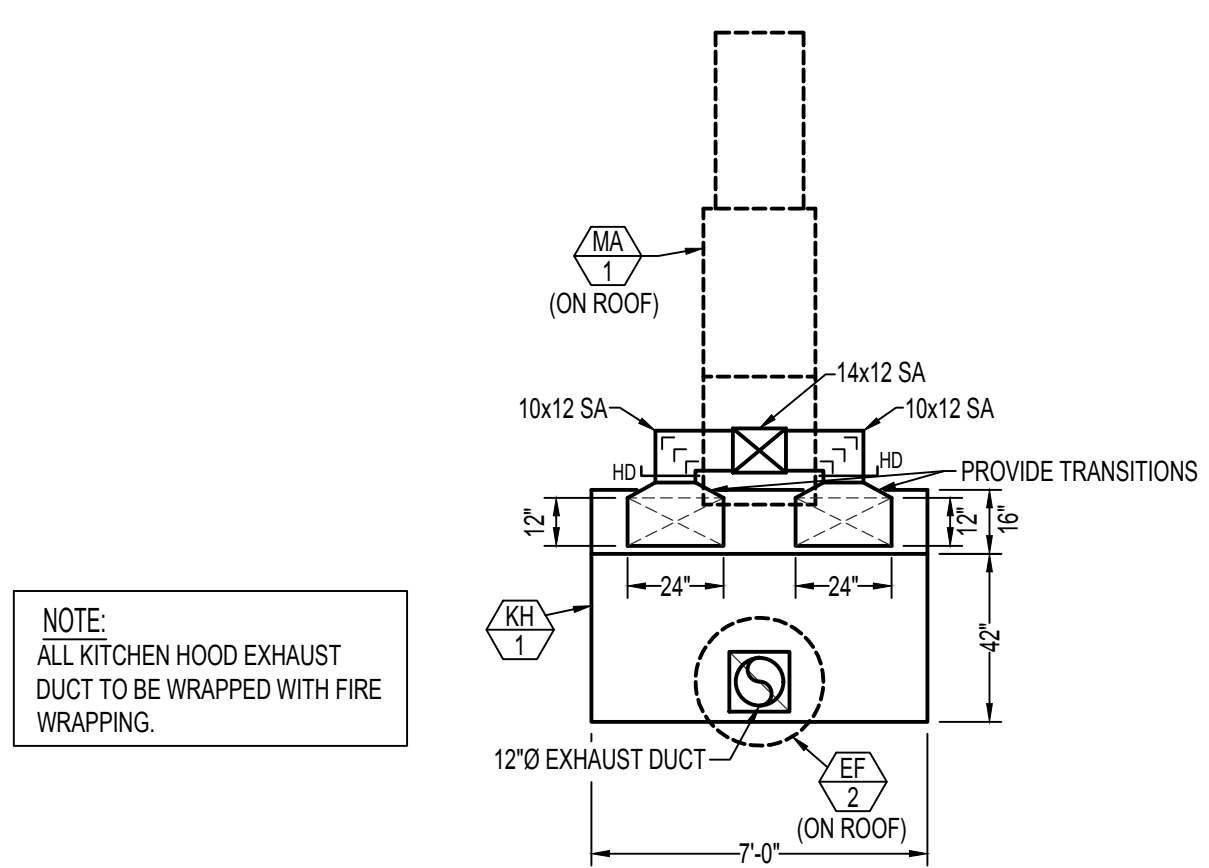


MECHANICAL FLOOR PLAN
SCALE: 1/8" = 1'-0"



KITCHEN HOOD ELEVATION
NO SCALE



KITCHEN HOOD DUCTWORK DETAIL
SCALE: 1/4" = 1'-0"

MECHANICAL LEGEND	
SYMBOL	DESCRIPTION
(T)	ELECTRONIC THERMOSTAT
(FC 1)	EQUIPMENT SYMBOL
(EH)	ELECTRIC WALL HEATER
(HD)	HAND DAMPER
(R-1)	ROUND BRANCH DUCT WITH HAND DAMPER
(R-2)	RECTANGULAR SUPPLY AND RETURN AIR DUCT TAKE-OFF
(TV)	TURNING VANES
(SFD)	SPIRAL WOUND EXPOSED DUCT
(IFD)	INSULATED FLEXIBLE DUCT
(SR)	SIDEWALL REGISTER SUPPLY OR RETURN AIR
(RAG)	RETURN AIR OR EXHAUST GRILLE
(CD)	CEILING DIFFUSER
(CF)	CEILING MOUNTED EXHAUST FAN

PLAN NOTES:

- REMOVE ALL EXISTING UNUSED SUPPLY AND RETURN AIR DUCTWORK IN THIS AREA.
- REMOVE EXISTING ROUND CEILING SUPPLY AIR DIFFUSER AND REPLACE WITH NEW CEILING DIFFUSER AS SHOWN. RECONNECT TO EXISTING SUPPLY AIR DUCTWORK ABOVE CEILING.
- CONNECT NEW SUPPLY AIR DUCTWORK TO EXISTING SUPPLY AIR DUCTWORK ABOVE CEILING. PROVIDE TRANSITION AS REQUIRED.
- REMOVE EXISTING CEILING RETURN AIR GRILLE AND REPLACE WITH NEW. CONNECT TO NEW DUCTWORK AS SHOWN.
- CLEAN EXISTING FLOOR REGISTER AND BALANCE TO CFM SHOWN ON PLAN.
- EXISTING UNDERFLOOR DUCTWORK TO REMAIN. PROTECT DURING DEMOLITION.
- CLEAN EXISTING CEILING RETURN AIR GRILLE AND CONNECT TO NEW DUCTWORK AS SHOWN. PROVIDE TRANSITION FROM GRILLE TO 8" DUCT AS SHOWN.
- REMOVE EXISTING CEILING RETURN AIR GRILLE.
- RUN NEW EXPOSED DUCTWORK AS HIGH AS POSSIBLE. EXPOSED DUCTWORK TO BE PAINTLOCK FOR FIELD PAINTING.
- EXISTING ELEC. CONVECTOR TO REMAIN. PROTECT DURING CONSTRUCTION.
- INSTALL UL RATED SMOKE DETECTOR INSIDE THE SUPPLY DUCT OF ROOFTOP UNIT AND INTERLOCK WITH UNIT FOR EMERGENCY FAN SHUT-DOWN.
- REFER TO LARGE SCALE KITCHEN HOOD DUCTWORK DETAIL ON THIS SHEET FOR DUCTWORK CONNECTING TO THE KITCHEN HOOD FROM THE MAKE-UP AIR UNIT AND EXHAUST FAN.
- KITCHEN HOOD FIRE SUPPRESSION CABINET TO BE MOUNTED ON WALL BEHIND HOOD. REFER TO MFG. INSTRUCTIONS FOR MOUNTING HEIGHT AND LOCATION.
- INSTALL CONDENSING UNIT ON ROOF IN LOCATION SHOWN. MAINTAIN A MINIMUM OF 3'-0" CLEARANCE FROM OTHER ROOFTOP EQUIPMENT. DROP REFR. PIPING DOWN THRU ROOF TO FAN COIL UNIT ON WALL IN I.T. ROOM AND SEAL ROOF PENETRATION WEATHERTIGHT. SEE DETAILS ON SHEET M201
- INSTALL NEW 7 DAY PROGRAMMABLE THERMOSTAT FOR NEW ROOFTOP UNIT.

GENERAL NOTES:

- THE CONTRACTOR SHALL CHECK AND VERIFY ALL DIMENSIONS AND CONNECTIONS ON THE JOB SITE. ALL WORK SHALL BE EXECUTED FROM MEASUREMENTS TAKEN AT THE SITE.
- THE MECHANICAL CONTRACTOR SHALL BE RESPONSIBLE TO INSURE PROPER CODE CLEARANCES FOR ELECTRICAL AND MECHANICAL ACCESS WHEN INSTALLING ANY EQUIPMENT SUPPLIED BY THE MECHANICAL CONTRACTOR.
- IT IS CRITICAL THAT THIS CONTRACTOR COORDINATE EQUIPMENT LOCATIONS WITH PIPING, DUCTWORK, ELECTRICAL CONDUIT AND BUILDING STRUCTURE TO INSURE CODE COMPLIANCE.
- CEILING DIFFUSERS ARE SHOWN IN APPROXIMATE LOCATIONS. REFER TO LIGHTING PLANS AND REFLECTED CEILING PLAN FOR EXACT LOCATIONS.
- DUCT DIMENSIONS CALLED OUT ON DRAWINGS ARE INSIDE FREE AREA DIMENSIONS. ACOUSTICAL DUCT LINER ARE TO BE ADDED TO OVERALL MEASUREMENTS.
- ALL DUCTWORK AND PIPING WHICH PASSES THRU FIRE RATED WALLS TO BE FIRE STOPPED WITH APPROVED FOAM OR SEALANT. REFER TO SPECIFICATIONS FOR APPROVED MANUFACTURES.

NO.	REVISIONS	DATE

This document or any part thereof in detail or design concept is the personal property of Keller Associates, Inc. and shall remain the property of Keller Associates, Inc. without written authorization of Keller Associates, Inc.

SBT HRDC ROOF COLLAPSE
FORT HALL, IDAHO

MECHANICAL FLOOR PLAN

Professional Engineer Registered
Dwayne B. Swartz
STATE OF IDAHO
MAYNIE C. SUDDEN
Aug 13, 2020

Engineers Systems Associates
1355 EAST CENTER
POCATELLO, IDAHO 83201
PHONE: (208) 233-0501
FAX: (208) 233-0529
EMAIL: eso@engsystems.com
ESA JOB NUMBER: 19033